

SCHOOL CONTEXT STATEMENT

Updated: February 2025

School number: 0797

School name: UNLEY HIGH SCHOOL

School Profile

Unley High School focuses upon its core values of Excellence, Respect, Diversity and Community. The school strives to equip students with the academic and social capabilities for productive community engagement, and the effective use of Learning Technologies to enhance student achievement. Unley High School has a strong SACE focus, including STEM, Languages, a French Bilingual special interest program, The Arts, Humanities, and Physical Education. Also, a Summit Program for gifted students, Personalised Learning and extra curricula programs offering sport, clubs and academic competitions. The school also has a large international program and a specialised Rowing program.

Key Features of the School

The school has a proud tradition of academic excellence.

The school places a primary emphasis upon learning and upon personal development. It creates and fosters a school culture and ethos based upon care, compassion and respect for others through our Positive Behaviours for Learning program. Teachers are committed to their own professional growth as part of a critically reflective school community and, as a result, seek out innovations as a means of strengthening all these features.

It is an active and rewarding community in which staff, students and parents learn together.

1. General Information Part A

Principal: Greg Rolton
Address: 101 Kitchener Street, Netherby, South Australia 5062
Partnership: Mitcham Plains
Distance from GPO: 6 kms
Phone No: 08 8394 5400
Fax No: 08 8373 3031

Category of Disadvantage Index. 6

Enrolment

February FTE Enrolment	2023	2024	2025
Year 7	250	271	247
Year 8	260	263	266
Year 9	287	273	255
Year 10	266	301	267
Year 11	277	290	279
Year 12	220	239	251
Total	1569	1637	1565
International	70	70	75
FLO(2023/4) TL(2025)	44	68	57
School card percentage	13.8%	7.39%	15.97%
Students with disability percentage	5.35%	4.58%	9.0%
NESB Enrolment percentage	22.37%	34%	33%
First Nations students' percentage	0.83%	1.2%	1.2%

Part B

Deputy Principal	Tanya Wilson
Head of Senior School	Toby Watts
Head of Middle School	Sue Richards
Assistant Principal Daily Operations	Sally Nadebaum
Assistant Principal Wellbeing & Alternative Learning	Tash Thornton
School Business Leader	Yvonne Barlow

Leaders	English Literacy & EAL	HASS & EIF/AIF
	Health Physical Education & Sport	Science & STEM
	Mathematics & Numeracy	Design & Technology/Industry connections
	The Arts & Community Connections	Languages & Student Voice
	Year Level Leaders x 6	International Student Program

Special Arrangements: The school shares a three-court Sports Stadium with 'Life. Be in It' Australia, on campus. Many students participate in after-school sporting activities through the Centre's programs.

Unley High School has an extensive rowing program that includes a curriculum based Special Interest Program and Extra Curricula Rowing program that competes in SA School Rowing competition. The school shares a boat shed facility on the Torrens Lake and the West Lakes Aquatic Centre to store equipment and facilities.

Year of Opening: 1910

Public Transport Access: The school is accessible via a number of public bus routes which bring students to the school gate. Students can also access the school via train and connecting buses.

2. Students (and their Wellbeing)

General characteristics

Student Enrolments: Of the 2025 student cohort, approximately 250 students were born outside Australia. A significant number of students bring a diverse cultural heritage to the school from over 40 other countries throughout the world. The school participates in the International Student Program through International Education Services (IES) and currently has over 60 full-fee-paying overseas students mainly from Asian countries. At the same time, there are a number of students who come from significantly disadvantaged social and economic backgrounds. Approximately 11% of students are School Card holders.

Personal and Social Identity (PSI) programs: There are a range of student personal development programs at each year level. These are reviewed on a yearly basis to best meet the needs of the student cohort.

To support students to adapt to high school there is an extensive Transition Program which begins in Term 4 with the year 7 Orientation Days. Major programs which also support our students are:

Camp: Year 7 students attend a two day camp with their PSI teachers in Term 1. The camp assists students to get to know each other and to build positive relationships with their teachers.

Peer Support: Year 7 students spend one lesson a week in Term 1 working with their Peer Support Leaders. Peer Support Leaders are friendly and supportive Year 11 students who are specifically trained to mentor Year 7 students. They work together on team-building skills and on issues such as decision-making and building self-esteem. The Leaders are excellent role models.

Dual PSI teachers: two teachers lead each PSI in years 7 and come to know the students and their parents/caregivers very well. Year 9, 10, 11 and 12 Programs reflect the differing needs, interests and developmental levels e.g. road safety awareness, career planning, mindfulness, etc.

Support Offered: The school supports the wellbeing of students through two support programs. The Wellbeing centre is supported by a Wellbeing Leader, 3 Youth Workers and a Pastoral Support Worker and provide support for all students during the school day. Tailored Learning provides a different way of learning for some students. Tailored Learning is supported by a Wellbeing Leader, a range of specialist teachers and two Youth Workers.

Positive Behaviours for Learning at Unley High School: We are a community of learners, here to learn to our utmost ability, and achieve the highest outcomes of which we are capable. Our diverse community values learning in all its forms and at all levels, and we encourage each other to do our best.

As staff, we have a holistic view of students and what happens in classrooms. We strive for excellence and are involved in the total wellbeing of the children in our care. Respect is our foundation, so students' wellbeing and their diverse backgrounds and identities are valued. We strive to engage and challenge all learners to achieve the highest outcomes within our capability.

As students, we embrace learning in a supportive and encouraging environment. We take responsibility for our own learning and treat others with respect. As resilient learners, we seek and receive support to develop the skills for continual improvement. We communicate with our teachers and support groups and challenge ourselves to achieve excellence in our learning.

As our parents and community members, respectful communication and interactions are crucial with staff members so that we can work together to best support your child.

This school-wide Positive Behaviour for Learning (PBL) framework supports equity and improved learning and behaviour outcomes for students by using:

- responsive systems
- data
- practices support.

PBL focuses on teaching behavioural skills through explicit instruction. Through this approach, PBL is both preventative and responsive to the needs of children and young people. Some of the reported outcomes of PBL in other jurisdictions include increased teacher wellbeing, greater student engagement and attendance, improved inclusive practices and reductions in behaviour responses so that teaching and learning time is maximised.

At Unley High School our Positive Behaviours and Interventions for Learning (PBIL) framework requires a comprehensive integrated whole school approach to student wellbeing and behaviour that addresses the diverse needs of every student. We value the rights of all students and staff to learn in a safe and supportive environment.

Through this framework:

- Students respond positively as they understand what positive learning behaviours are.
- Staff respond consistently to student learning and behaviour.
- Students feel safe and cared for at school.
- Parents/caregivers and the community are involved in students' school life.
- Incidents of challenging behaviours are significantly reduced.

The consequences applied in response to behaviour not upholding our school values:

- Are appropriate in terms of the level of severity
- Are consistent in application
- Are mindful of individual circumstances
- Address any harm done (restitution where appropriate)
- Facilitate the restoration of positive relationships between all parties

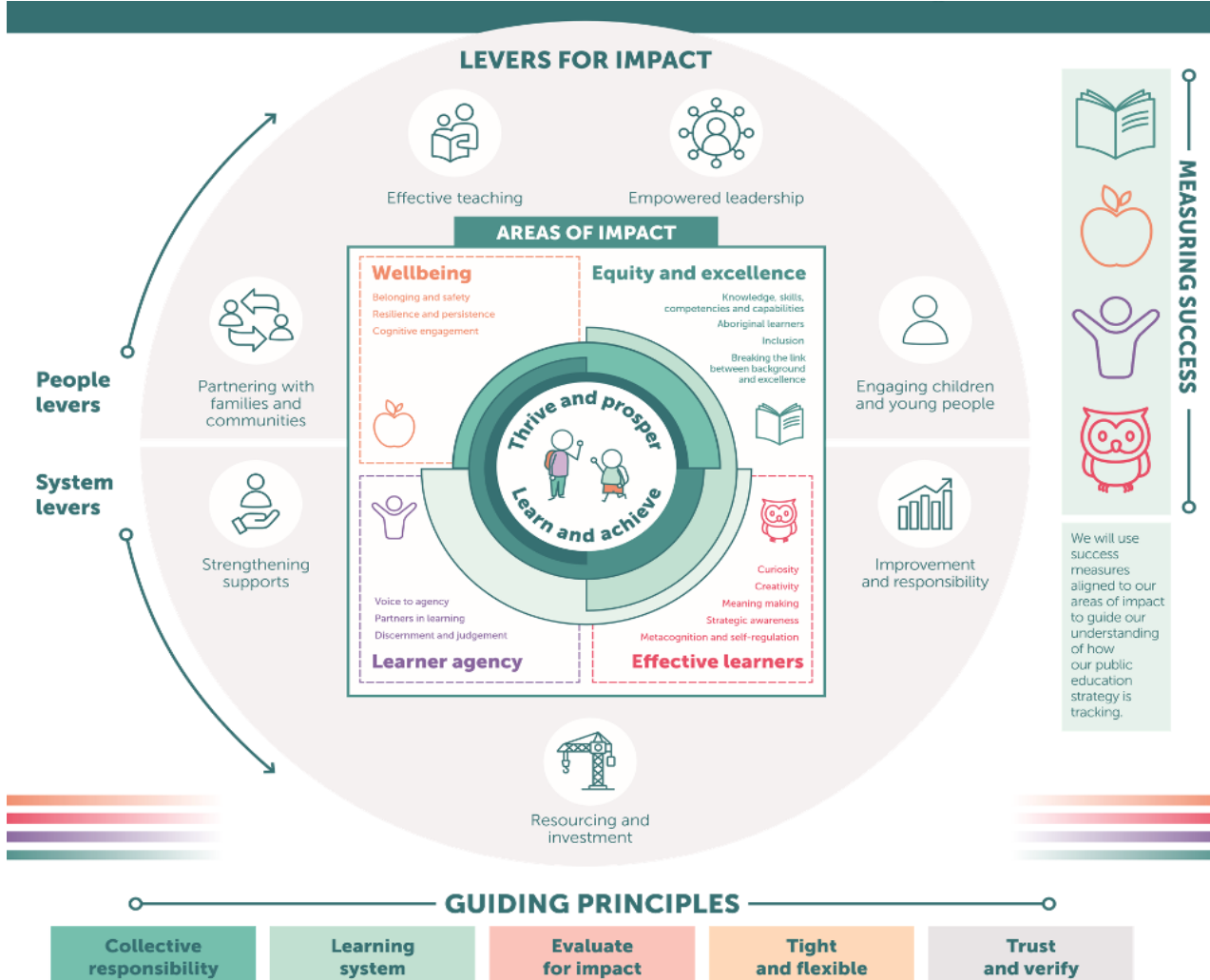
Student Government:

Each year Student Voice leaders are elected by their peers at Unley High School. The aim of the Student Voice is to encourage student participation in all areas of the school decision making process. This includes widening the range of activities and services available to students and to act as a liaison between students and staff. The Student Voice represents the students of Unley High School on Governing Council and its committees and explores ways for students to get involved and participate within the wider community. Year 12 Prefects are nominated annually. Student Voice has continued to grow at Unley High School and now features 4 Action Groups that are dedicated to addressing areas a interest to the wider student cohort. These 4 Action Groups all have a staff volunteer to support them in the implementation of agreed strategies across the school.

Strategic Planning 2025 – 2027 – The Utmost for the Highest Site Learning Plan

1. Increase student achievement in Literacy & Numeracy
2. Increase student achievement and engagement through improved Pedagogy
3. Targeting Learner Agency and Effective Learner to improve Voice to Agency, Metacognition and Strategic Awareness

Public Education Strategy



Values: Our school is underpinned by our values of Respect, Diversity, Excellence and Community

Vision: We are a community of learners and will pursue learning to the utmost of our ability and achieve the highest outcomes of which we are able

Mission: Unley High School develops young adults who are committed to excellence in all areas, and whose actions are ethical and responsible

Ethos: At Unley High School our values guide our wellbeing, engagement and responsible learning for all members of our community:

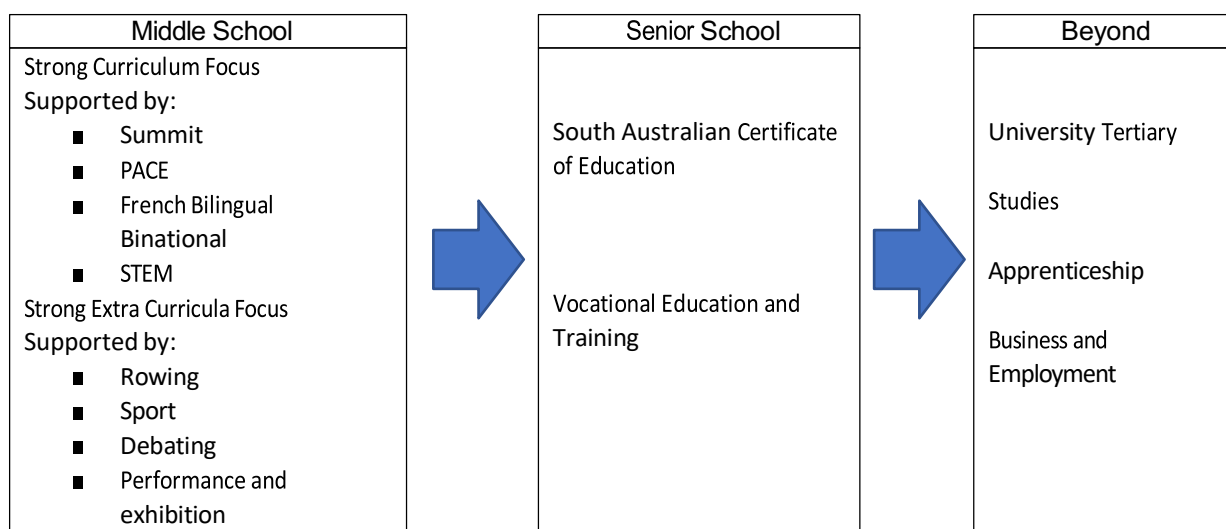
Respect – Regard for self and respecting of the rights of others

Excellence – Striving for the highest personal achievement in schooling, community and life- long learning

Diversity – Commitment to social justice and opposing prejudice, dishonesty and injustice

Community – Being a proactive and productive individual making a positive contribution to the school, local or global community

Unley High School Pathways for Students:



3. Curriculum

Please refer to the comprehensive Curriculum Handbook which can be found on the Unley High School website.

Special needs

The school offers English as an Additional Language to students across Years 7-12. This is done through both EAL classes and individual language support for students in other subjects.

The school operates a LINK Program for students with physical disabilities and provides a structured transition into secondary education for those students from Adelaide West Special School. Annually there are between 6 - 10 students from Years 7 - 12 who integrate into the mainstream school for their education. Their needs are catered for via a dedicated staff member from Adelaide West, other support staff and a dedicated room where the necessary modifications are available to support their physical disabilities.

Unley High School supports the personalised learning needs of students with the individual One Plan and learning difficulties through Literacy and Numeracy classes supported by the SSOs team.

Special curriculum features

Information and Communication Technology: In the complex life and work environments of the modern world, our young people require more than just content knowledge. At Unley High School, we support our students to develop their skills in critical thinking, problem solving, communications and collaboration. Students in all year levels have access to a range of technologies as tools to support ICT skill development across all curriculum areas.

Students in years 7, 8 and 9 participate in a 'Parent Funded Middle School Mobile Learning Program' using iPads. This innovative program has the potential to engage students, to enhance their achievement, to create new learning possibilities and to extend students' interactions with their local and global communities.

Senior students in Years 10, 11 and 12 are encouraged to bring their own device (Windows or Mac) enabling seamless learning between home and school, 24 hours a day.

Students and parents have access to Daymap our online learner management system. This system provides access to a range of services including attendance data, class notes & homework assessment requirements.

Assessment procedures and reporting

The achievement of learning outcomes is made explicit to parents and students on a regular basis. Students in Years 7-12 receive reports in real time with teachers publishing a minimum of assignments per term leading up to formal report at the end of each semester. Parent/teacher evenings are conducted in terms 2 and 3. The school uses the Daymap Assessment and Reporting software for its reporting requirements.

Joint programs

Mitcham Plains Alliance

Unley High School has an alliance with Mitcham Girls and Urrbrae Agricultural High Schools to offer some SACE subjects across the three campuses. This alliance allows us to offer the students at each of these schools access to the most comprehensive range of subjects available. Students who enrol in these subjects may have to travel to one of these schools to attend classes.

French Bilingual/Binational Program

Unley High School works in conjunction with Highgate School to deliver the State's French Bilingual/ Binational Program. In 2017 Reception and Year 1 classes began at Highgate and in 2018 a secondary stream began at Year 8 at Unley. Students undertake four subjects delivered in French language, of French, History/Geography, Mathematics and Science.

4. Sporting Activities

The school offers an excellent variety of competitive sports for students during the school years with a focus on student participation and engagement at school rather than producing elite athletes. It participates in weekly programs run by Southern Zone Sport, the Sports Association for Adelaide Schools and the Catholic School Girls Sports Association. Sports include badminton, basketball, cricket, football, indoor soccer, soccer, table tennis, tennis, touch football and volleyball.

In addition to weekly competitions students can take part in specialised sports events offered by Secondary School Sport SA. These include knockout team competitions and elite individual events such as cycling or various athletics events. Throughout the year fun based carnivals such as handball, beach events or modified football are also on offer.

During term 1 the school is involved in interschool Swimming and Athletics carnivals and at the end of the year we send a number of volleyball and basketball teams interstate for Australian Schools Championships competitions.

Rowing is strong within the school and is offered as both an extra curricula sport and also as a specialised subject. Both the Sport and the Rowing programs have dedicated coordinators.

5. Co-Curricular Activities

A range of activities exist within the school including Debating, Drama Productions, Peer Support program, Public Speaking, String Ensemble, Concert Band, Jazz Ensemble, Coding Club, Art Club plus competitions associated with the Gifted Education program.

Camps are organised either by faculties to support the curriculum, or by groups to foster social development, e.g. Peer Support Leaders' Training, Year 9 Ski Trip, Year 8 Orientation Camps, Rowing and Outdoor Education Camps. Tours interstate and overseas are organised to complement learning in Languages, Arts, Technology and Sports.

State and National competitions include IBM and Westpac Maths and Oliphant Science. School drama performances and musical performances are offered throughout the year.

6. School Facilities

Buildings and Grounds

In 2022 Unley High School completed major capital works to improve classrooms and facilities across the school. This included the 3-story building and the main building renovation a new covered outdoor learning area and fitness centre. The upgrade of facilities has continued with the library extension, redesign of the canteen and new ground facility in 2025. In 2026 the middle school is slated for an upgrade.

Student Facilities

The Student Services Office provides support to students in relation to information and movement, financial services and first aid.

Years 11 and 12 students have access to a dedicated Learning Hub as well as a courtyard area for informal gatherings during study periods which occur around the flexible timetable.

The School Canteen provides a wide selection of hot and cold food daily and had a major upgrade in 2024.

Staff Facilities

Each staff member has access to their own email address and account, which allows staff to access school files from home. All teachers have a Mac Book to support teaching & learning in the Middle School Program. The Staffroom is large, with facilities of high quality and on-going improvement is an objective.

Access for Students and Staff with Disabilities

All areas of the school are accessible to students and staff with disabilities via ramps, a lift and auto doors.

Access to Bus Transport

The school is accessible by a number of bus routes which bring students to the school gate. Students can also access the school via train and connecting buses.

7. School Operations

Decision Making Structures

Unley High School is a complex school community in which staff, students and parents participate in the development of policies and decisions which affect them. This participation occurs in a number of forums.

There are three major staff decision making groups in the school:

- Curriculum Professional Learning Teams provide advice and makes decisions about major policy directions involving teaching and learning and school operations.
- The Curriculum Leaders group makes major decisions about curriculum operation, implementation and professional learning. It makes recommendations about school development and improvement.
- The Executive Leadership team makes decisions about whole of school priorities, direction setting and the provisions of organisational processes that enhance school performance.
- The Personnel Advisory Committee advises the Principal about matters related to staffing. Joint staff,

parent and student policy groups include: **Governing Council** (works on governance with the Principal on the educational policies and programs); **Finance Advisory Committee** (formulates and monitors the Budget on the basis of the School Priorities; approves Budget submissions; recommends the final Annual Budget to Council).

Staff Committees: Social Committee, WH&S Committee, Summit (Gifted and Talented) Team, Positive Behaviours for Learning Team and Sports Committee.

Affiliated Parent Groups: Greek Parents' Council, Unley High School Rowing Club, Parent Voice Committee

Publications and Communication

Parent communication, excursions and payments, newsletters, calendars and other school forms are distributed through EdSmart. The school also has a Facebook page. A Year 7-12 Curriculum Handbook is published annually electronically in Term 3 at the beginning of the Subject Selection process.

The Staff Handbook is published on the school's Intranet.

Electronic Daily notes are available for students and staff via Daymap. Email is available to all staff within the school.

8. Local Community

General Characteristics

The school has a diverse cultural community. Students attending the school were born in over forty different countries from all areas of the world.

Languages spoken at home include Arabic, Chinese, Croatian, Dutch, English, Farsi, French, German, Greek, Hindi, Indonesian, Italian, Japanese, Korean, Nepalese, Persian, Polish, Russian, Serbian, Sinhalese, Spanish, Swahili, Turkish, Urdu and Vietnamese.

Parent and Community Involvement

Parents are involved through the Governing Council and the school's formal committee structures such as Parent Voice, Fundraising and Sport. The Greek Parent Council and Unley High School Rowing Club are active avenues for parent involvement.

Feeder Schools

Primary schools located in-zone are Black Forest, Clapham, Colonel Light Gardens, Edwardstown, Mitcham, Highgate and Westbourne Park. Students enrol from many other primary schools including Belair, Glen Osmond, Parkside and Unley.

Commercial/Industrial and Shopping Facilities

A number of shopping facilities are close to the school including the Mitcham Square Shopping Centre

Other Local Facilities

A range of local facilities are available in the proximity of the school, including Council Chambers and the Mitcham Library, bush walking trails and an arboretum.

Local Government Body

City of Mitcham Telephone

8372 8888.